

Wonder Woman 1942-1986: A Timeless Superheroine



Wonder Woman, the iconic superheroine created by William Moulton Marston, has been a beacon of hope and inspiration for generations of readers. Her adventures have captivated audiences since her debut in

1941, and her legacy continues to grow stronger with each passing year. This article will explore the history of Wonder Woman from 1942-1986, during which time she underwent several significant changes and became one of the most recognizable superheroes in the world.



Wonder Woman (1942-1986) #216 by Galin H

★★★★★ 5 out of 5

Language : English

File size : 66568 KB

Print length : 21 pages

Lending : Enabled

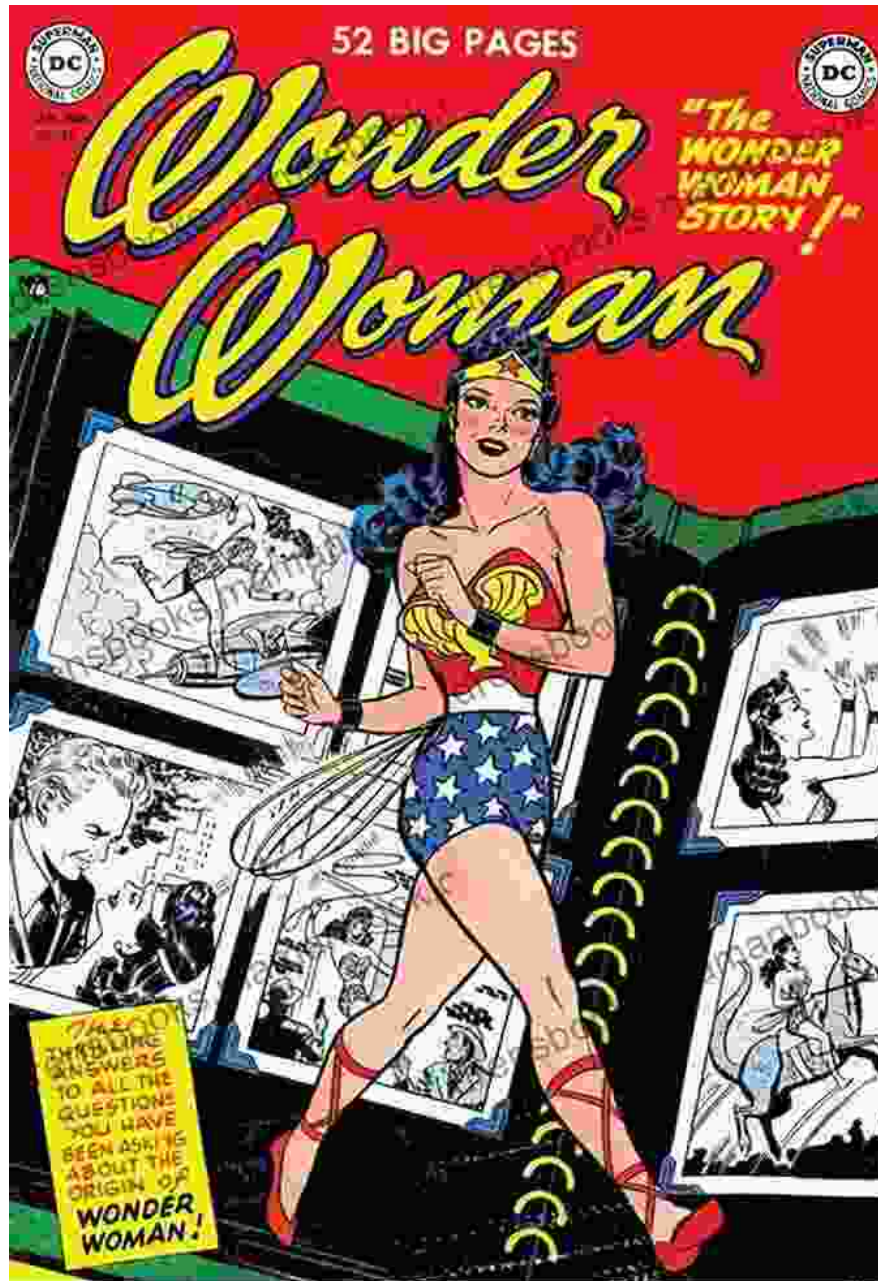
Screen Reader : Supported

FREE

DOWNLOAD E-BOOK



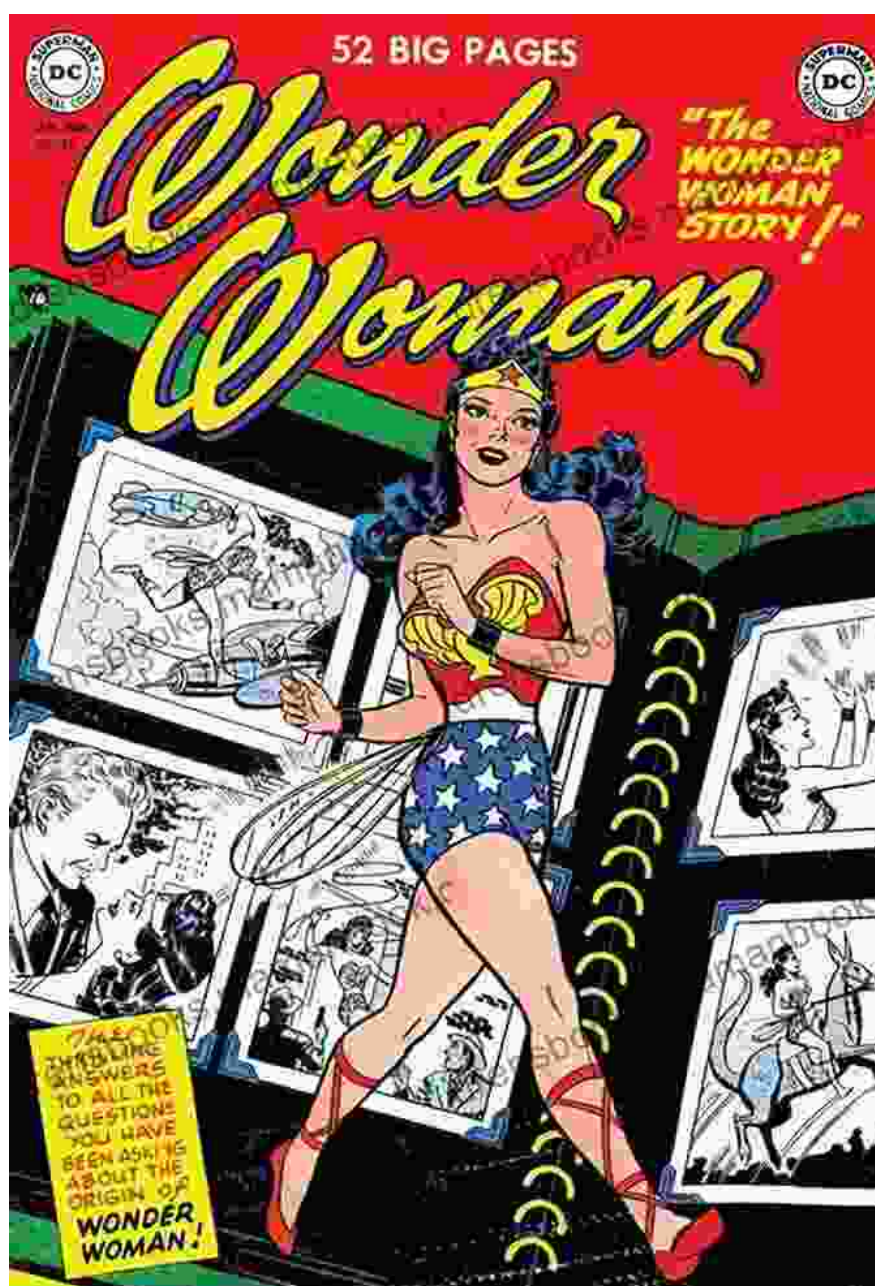
The Golden Age (1942-1950)



Wonder Woman made her debut in "All Star Comics" #8 in December 1941. Created by William Moulton Marston and artist H.G. Peter, she was an instant success. Marston's vision for Wonder Woman was that of a strong, independent female superhero who used her powers to fight for justice and equality.

During the Golden Age, Wonder Woman's adventures were often set against the backdrop of World War II. She fought alongside the Allies against the Axis powers, and her stories often reflected the social and political issues of the time. Wonder Woman also became a symbol of female empowerment, as she demonstrated that women could be just as strong and capable as men.

The Silver Age (1950-1970)



The Silver Age of Comics began in 1956, and it saw a number of changes to Wonder Woman's character. She was given a new costume, and her powers were slightly altered. She also became more involved in the superhero community, joining the Justice Society of America.

During the Silver Age, Wonder Woman's adventures continued to reflect the social and political issues of the time. She fought for civil rights, women's rights, and environmental protection. She also became a role model for young girls, showing them that they could be anything they wanted to be.

The Bronze Age (1970-1986)

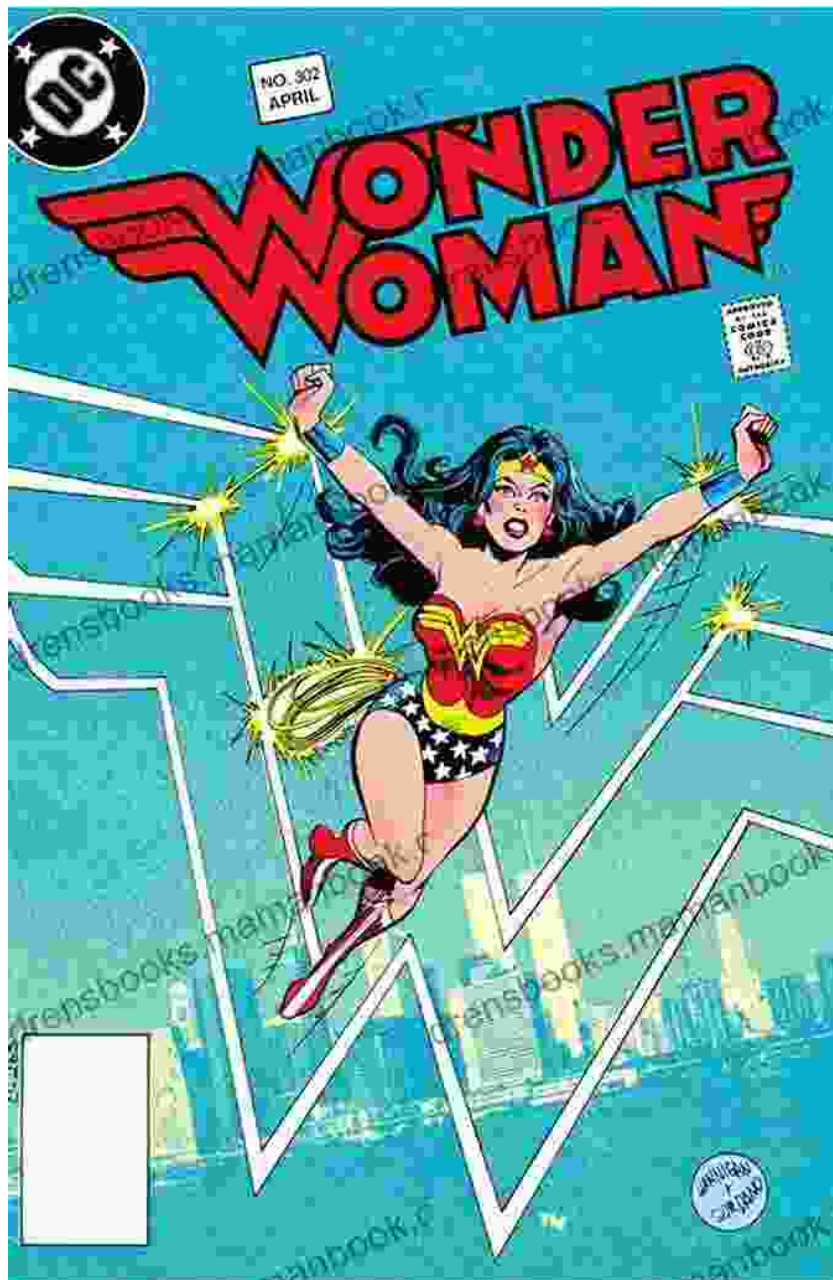


The Bronze Age of Comics began in 1970, and it saw a number of significant changes to Wonder Woman's character. She was given a new origin story, and her powers were once again altered. She also became more independent, and she began to question the authority of the gods.

During the Bronze Age, Wonder Woman's adventures continued to explore social and political issues. She fought against corruption, poverty, and war.

She also became a symbol of peace, and she worked to promote understanding and cooperation between different cultures.

The Legacy of Wonder Woman



Wonder Woman has been a cultural icon for over 80 years. She has inspired countless people with her strength, courage, and compassion. She

has also been a pioneer for female superheroes, and she has helped to pave the way for other strong and independent female characters.

Wonder Woman's legacy continues to grow stronger with each passing year. She is a timeless superheroine who continues to inspire and empower people all over the world.

Wonder Woman's journey from 1942-1986 was one of constant evolution and growth. She went from being a symbol of female empowerment to a champion of social justice and peace. She has inspired countless people with her strength, courage, and compassion, and her legacy will continue to grow stronger for generations to come.



Wonder Woman (1942-1986) #216 by Galin H

★★★★★ 5 out of 5

- Language : English
- File size : 66568 KB
- Print length : 21 pages
- Lending : Enabled
- Screen Reader : Supported

FREE **DOWNLOAD E-BOOK** 



Reading Wellness: Lessons in Independence and Proficiency

Reading is a fundamental skill that can open up a world of knowledge, entertainment, and personal growth. For children, reading is especially important as it helps them...



How Global Currencies Work: A Comprehensive Guide to Past, Present, and Future

Overview of Global Currencies A currency is a medium of exchange that is used to facilitate transactions between people and...